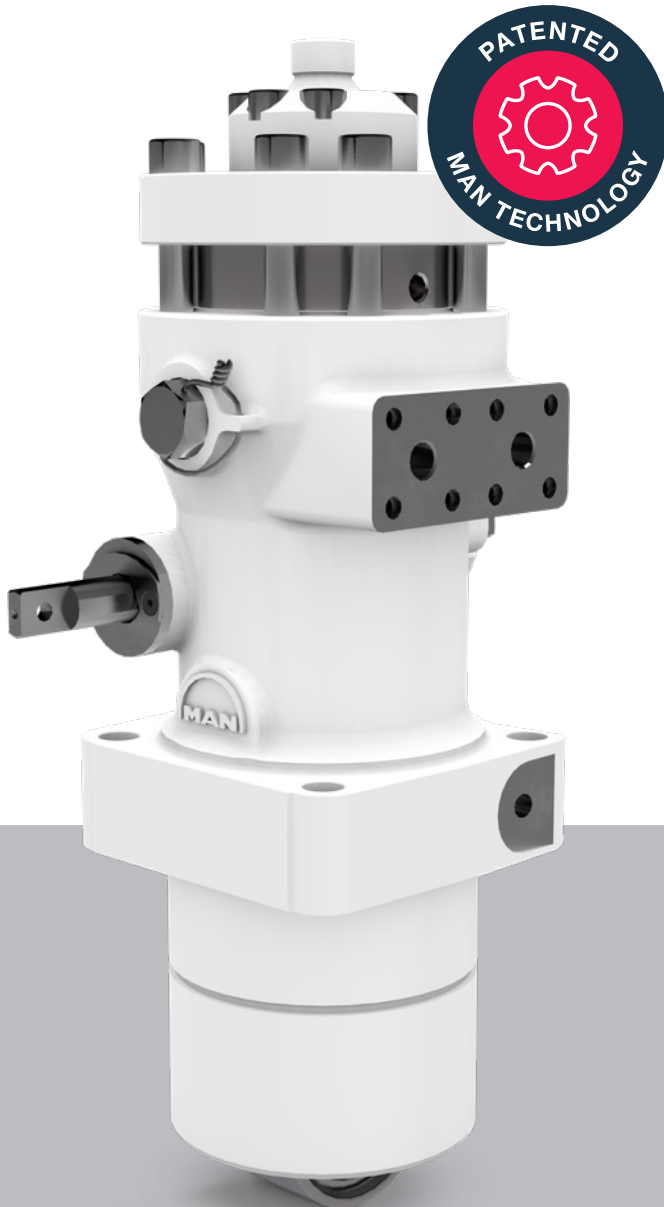


# Next level evolution

## for 32/40 engines



**The patented MAN Mk3 injection pump sets a new benchmark in reliability.**

This new pump generation provides significantly increased reliability and more than doubles the operating time between overhaul for MAN 32/40CD engines.

**Benefits at a glance**

- The most robust design for your reliable engine operation
- Significant reduction of sticking plungers
- Leakage reuse
- State-of-the-art manufacturing
- Increased TBO
- Obliging cost management
- Easy to upgrade
- Manufactured in Germany
- Simple Mk1 to Mk3 conversion
- For all conventional 32/40CD and 32/44K engines

# MAN Mk3 injection pump

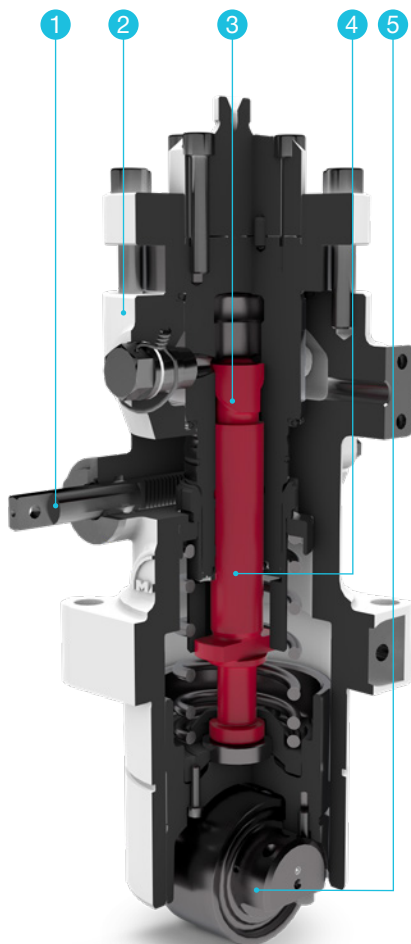
## Pump revolution

During the new pump's developmental phase, MAN PrimeServ set its focus on new technological innovations to replace the conventional injection system.

The implementation of a sealing ring inside the pump barrel significantly reduced lacquering and all associated side-effects. Similarly, the new design now avoids the mixture from fuel and lube oil, which enables their re-use and minimises the need for their disposal. These features are confirmed by extensive MAN test rig field tests.

MAN has redesigned the 32/40CD injection pump and established a new, state-of-the-art standard. It is setting a new benchmark in reliability, which is absolutely unique in the market. MAN manufactures the pump completely in its facilities in Augsburg, Germany.

**Upgrading the preceding Mk1 model to the new Mk3 model can be handled through a simple replacement of the plunger-barrel, the regulation and pump drive. This process can be part of a regular maintenance, which prevents high additional costs.**



- 1 New regulating mechanism**  
for the good feeling of a fail-save assembly
- 2 Reuse your existing pump housing**
- 3 Pump element unit**  
with coated plungers produced at highest technological standards
- 4 Innovative sealing ring**  
in combination with the MAN-patented flushing system to realize the highest robustness and reliability
- 5 Drive components**  
with optimized running behavior and latest design

**MAN Energy Solutions**  
86224 Augsburg, Germany  
Commercial: +49 821 322 1799  
Technical: +49 821 322 1499  
PrimeServ-aug@man-es.com  
www.man-es.com