

# On-site recovery

## MAN PrimeServ

**When unexpected events take out your engine, our on-site recovery team provides the in-situ machining you'll need to get back in operation as quickly as possible.**

### Recovery expertise you can count on

With over 65 years of experience, On-Site Recovery has unmatched knowledge of your MAN engine, and has the skills and tools it takes to bring any engine back to manufacturer

specifications – even against great odds. No matter how complex the problem, how small the tolerances, or what kind of customized tools we need to apply, we will get the job done.

### Anytime, anywhere, any manufacturer

The on-site recovery service is based out of MAN PrimeServ offices around the world. The size of our team and our urgency culture mean 24/7 availability and service in almost every location around the world. And while we are proud to be part of MAN Energy Solutions, we recover not just MAN engines and other components, but systems from any manufacturer.

### Why choose us

- Global presence
- Fast response times
- Recovery to manufacturer's specifications
- Service equipment from any manufacturer
- Over 65 years of experience
- Solve problems against the odds

### What we do

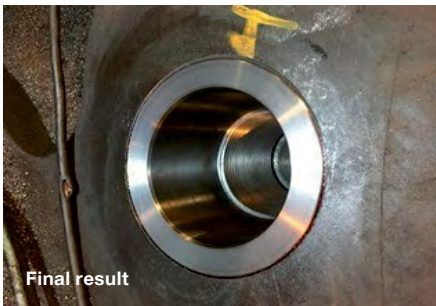
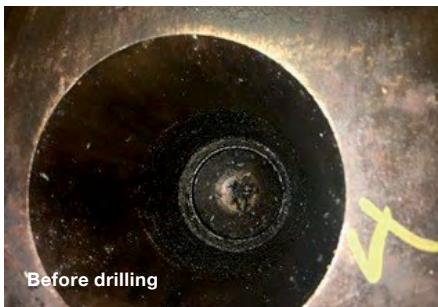
- Crankpin recovery
- Main journal recovery
- Main bearing saddle recovery
- Bearing line recovery
- Stud & thread recovery
- Flywheel recovery
- Cylinder cover recovery
- Cast iron recovery
- Engine frame recovery
- Chain wheel recovery
- Turbine casing recovery
- Pump casing recovery
- Gearbox recovery
- Flange recovery
- Measurement & alignment
- Customized recovery





# Stud and thread recovery

## Drilling and placing insert



If corrosion or other unforeseen circumstances have led to a broken cylinder cover bolt or stay bolt and maybe even damages to the thread, it can be difficult or even impossible to remove the bolt. MAN PrimeServ On-site Recovery are specialists in drilling out the damaged material and restoring the tapped bore to original dimensions allowing the use of standard studs after repair.

The repair includes the following steps:

- 1 Drilling oversize bore
- 2 Tapping oversize bore
- 3 Placing the insert using a specialized tool
- 4 Bore is restored to original specifications

**MAN Energy Solutions**  
2605 Brøndby, Denmark  
P +45 4373 6620  
osr-cph@man-es.com  
www.man-es.com/primeserv

All data provided in this document is non-binding. This data serves informational purposes only and is not guaranteed in any way. Depending on the subsequent specific individual projects, the relevant data may be subject to changes and will be assessed and determined individually for each project. This will depend on the particular characteristics of each individual project, especially specific site and operational conditions.

Copyright © MAN Energy Solutions. Printed in Denmark Prinftotrekroner-Nov-2019-3010-0411-02