

# S.E.M.T. Pielstick PC2.6 B Marine

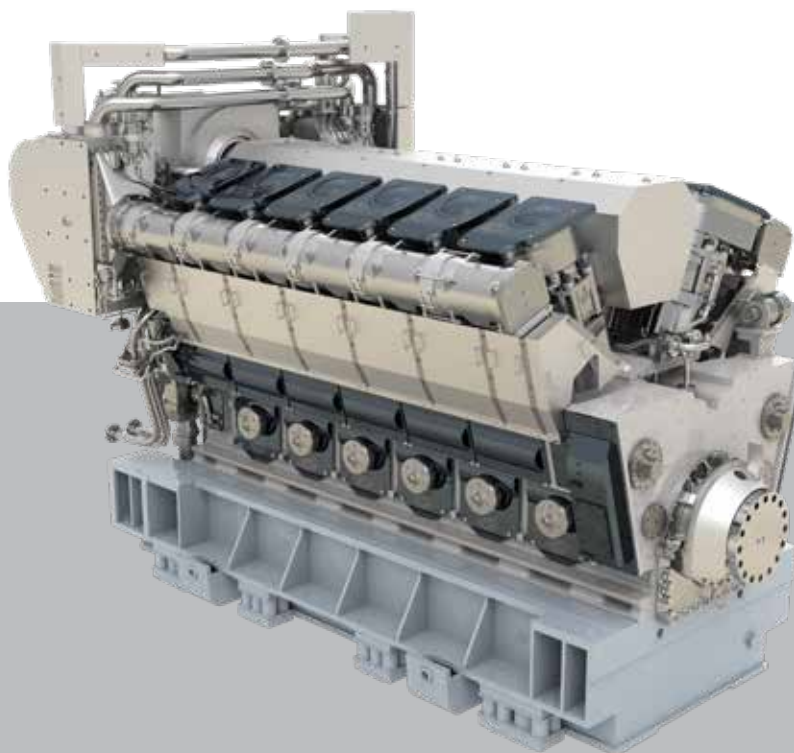
## Propulsion

### Design Concept:

- Reduced weight
- Highest compactness
- All driven pumps
- Hydraulic governor definition for Marine application
- Reinforced thrust bearing for shock resistance
- Standard fuel injection system
- Well-proven design features

### Benefits for the operator:

- Compact engine room design
- Reduced operating costs
- Extremely reliable

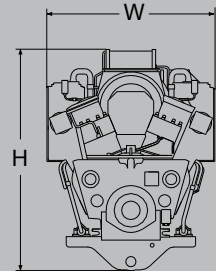


# S.E.M.T. Pielstick PC2.6 B Marine

## Propulsion

### Output

Bore 400 mm, Stroke 500 mm	12V	14V	16V	18V
Rated power output (kW)	9,000	10,500	12,000	13,500
rpm	600	600	600	600



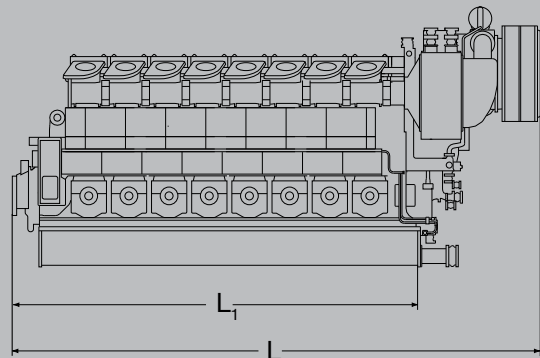
### Specific fuel oil consumption (SFOC) to ISO conditions

Engine rating	MCR 100%	MCR 85%
SFOC	185 g/kWh	179 g/kWh

Specific lube oil consumption: 1.2 g/kWh.  
 Figures on theoretical propeller curve for distillates according to ISO 8217 DMA.  
 ICFN, 1 hour every 6 operating hours

### Dimensions

Cyl. No.	12V	14V	16V	18V
L (mm)	8,247	8,987	9,727	10,467
L <sub>1</sub> (mm)	5,960	6,700	7,440	8,180
H (mm)	4,794	4,794	4,794	4,794
W (mm)	3,674	3,674	3,674	3,674
Dry mass (t)	94	104	114	123



### General

- Four-stroke sea-proven engine
- Conservative Brake Mean Effective Pressure (BMEP) resulting in a low mechanical stress fatigue and consequently a high reliability factor and long TBO: 32 000 Hrs
- Engine base qualified for nuclear applications

### Main features

- Conventional reliable fuel injection
- Seawater, LT and HT integrated driven pumps
- Integrated lubrication system
- Air start
- MAN control system
- IMO Tier II compliant EPA

### Fuel & Lube oil

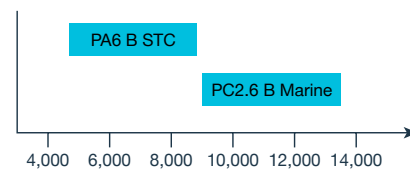
Distillate marine fuels according to ISO 8217:

- DMX, DMA, DMZ and DMB
- NATO F-44 (JP5)
- Biodiesel B20, B30

Lube oil:

- SAE 40
- MC30 (code NATO O-278)

### Rated power output (kW)



### Military specific features

- Shock resistant
- Full blackout capability (no electrical supply)
- Low airborne & structure borne noise
- Low Heat emission (IR signature)
- Driven fuel pump with black start capability

### Optional Common Rail injection system Available for DO and HFO

- Reduction of smoke emissions under visibility limit
- Reduction of fuel consumption from 3% to 6% (depending on operating profil and NOx constrains)
- Retrofit solution

### MAN Energy Solutions France SAS

8, avenue Antoine Bourdelle  
 BP 427  
 44615 Saint-Nazaire Cedex France  
 Phone +33 2 40 90 65 99  
 info-fr@man-es.com  
 www.man-es.com



S.E.M.T. Pielstick – a brand of MAN Energy Solutions France SAS