

Annex D of AN 410 Part 1.1 Annex 3 of AN 400 Part 2

Example pictures for coating of
turbocharger components

Approved: P.Kießling, PEQAC

Replace: 2020-02

Replaced by:

Legend:



Area to be coated with coating system G3 according to AN 410 Part 1.1 or according to AN 400 Part 2 in case of purchased parts.



Area does not need to be coated.
Overspray is allowed.

Area may be coated with coating system G3, if the surface preparation, the coating according to AN 410 Part 1.1 or rather AN 200 Part 2 as well as the checking of the coat can be realized by a reliable process.

The coat on raw part surfaces which will be machined subsequently, does not need to be checked.

In-house, uncoated areas and surfaces with overspray must be preserved according to AN 400 Part 1. For purchased parts, a temporary corrosion protection according to AN 400 Part 2 is required.



Area must stay free from paint and need to be covered while coating.

In-house, uncoated areas which are endangered by corrosion must be preserved according to AN 400 Part 1. For purchased parts, a temporary corrosion protection according to AN 400 Part 2 is required.

The images shown, also apply to the respective components of other types of turbocharger.

Examples for turbine inlet cases
Examples for turbine outlet cases
Examples for Bearing cases
Examples for Compressor cases

11.50132-xxxx and 11.50100-xxxx
11.50632-xxxx
11.51732-xxxx and 11.51700-xxxx
11.54632-xxxx and 11.54600-xxxx

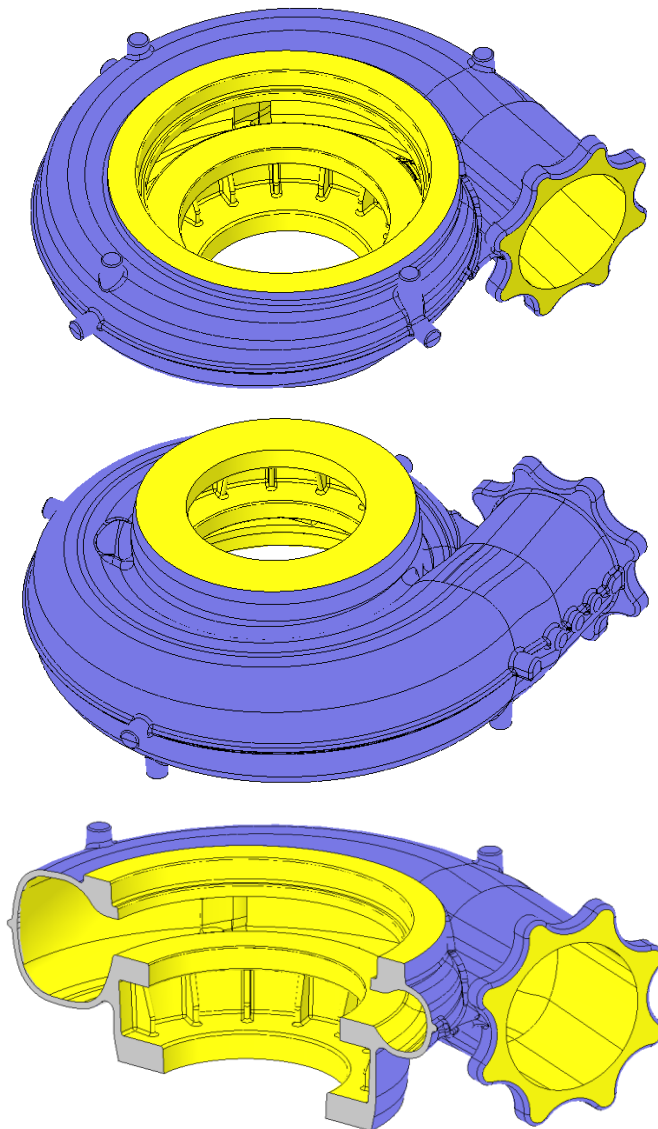
Page 2 - 5
Page 6 - 8
Page 9 - 11
Page 12 - 14

Annex D of AN 410 Part 1.1

Annex 3 of AN 400 Part 2

Example pictures for coating of
turbocharger components

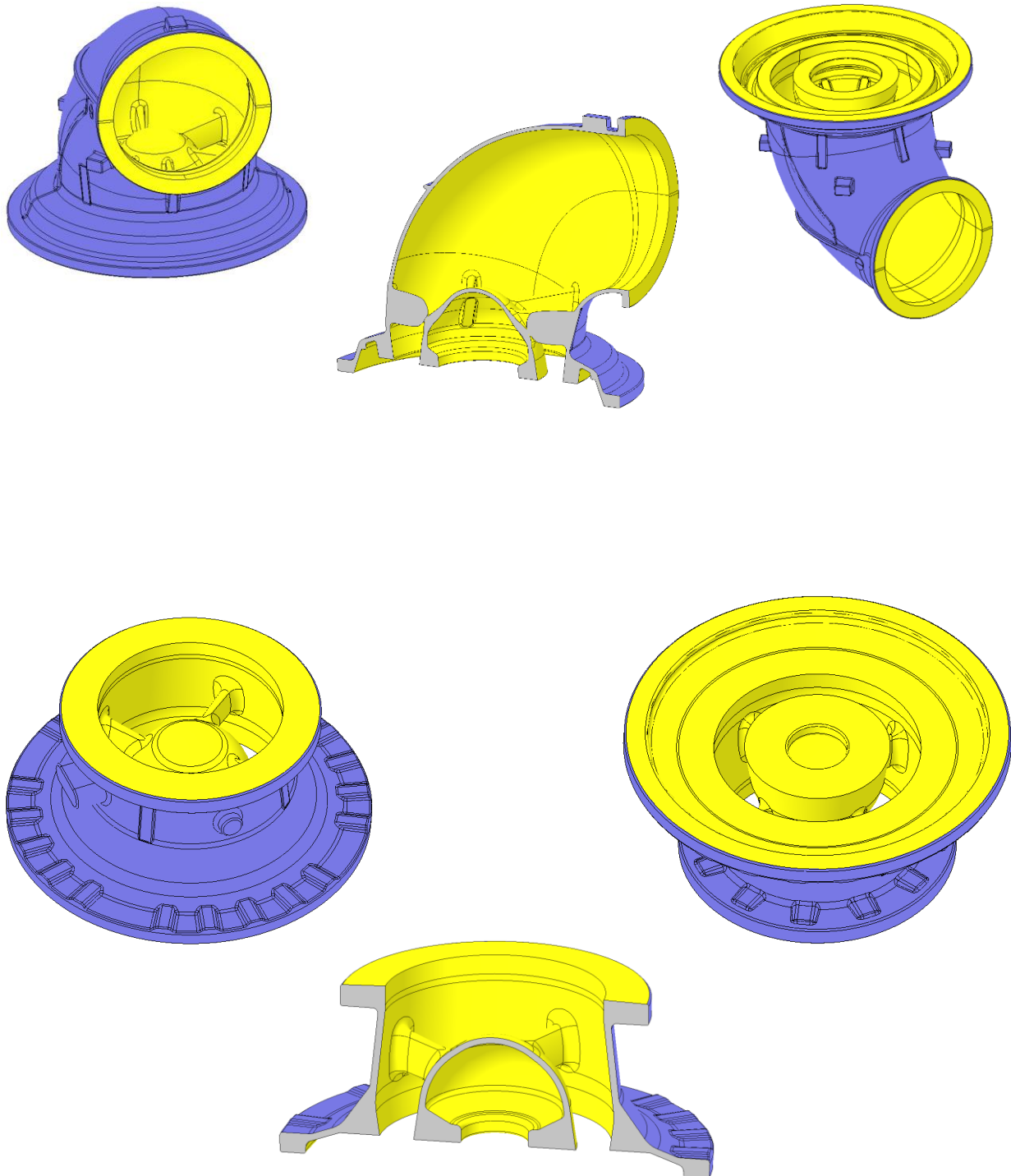
Turbine inlet casing of the type TCR



Annex D of AN 410 Part 1.1 **Annex 3 of AN 400 Part 2**

Example pictures for coating of
turbocharger components

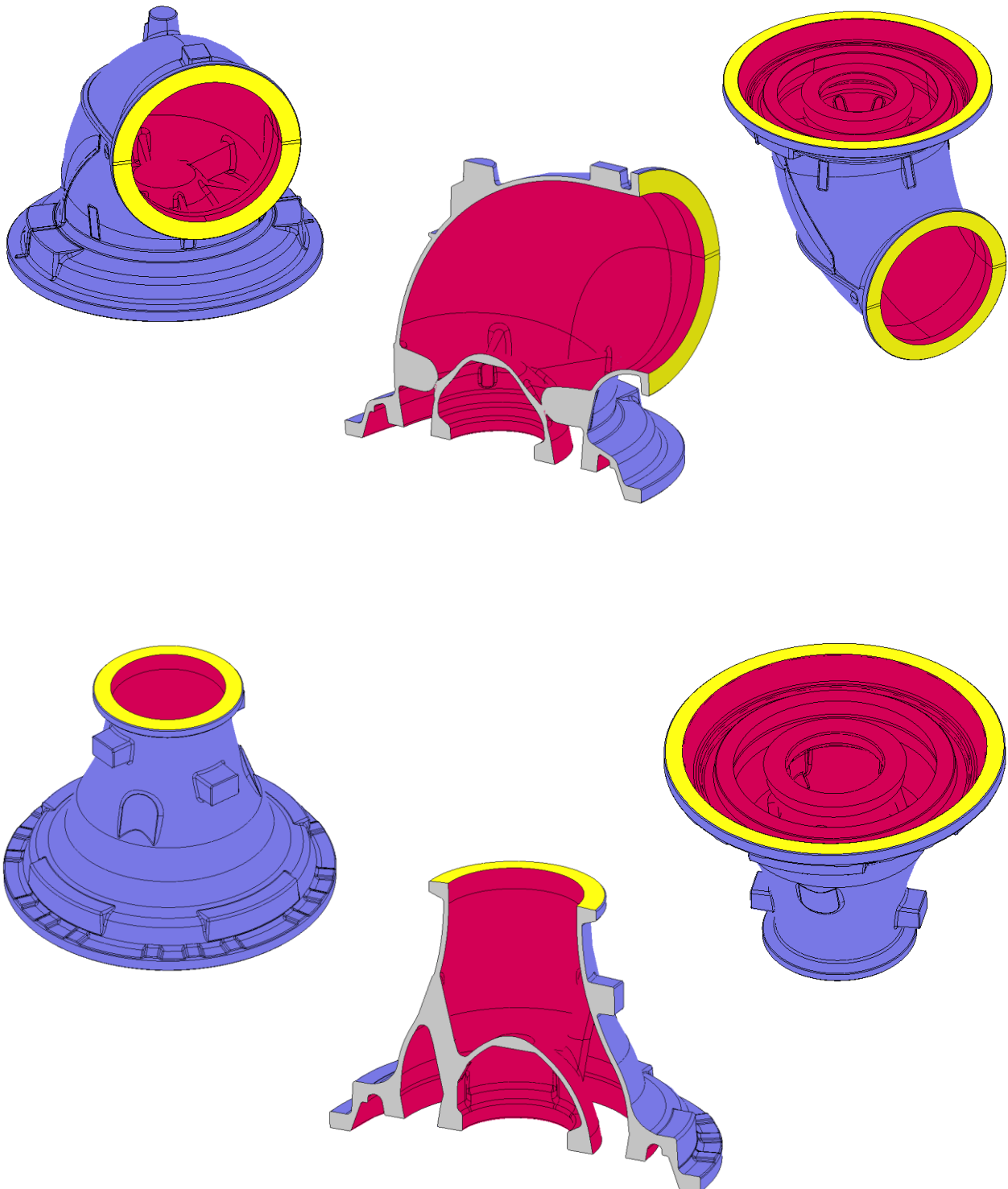
Turbine inlet casing of the type TCA



Annex D of AN 410 Part 1.1 **Annex 3 of AN 400 Part 2**

Example pictures for coating of
turbocharger components

Turbine inlet casing of the type TCA VTA

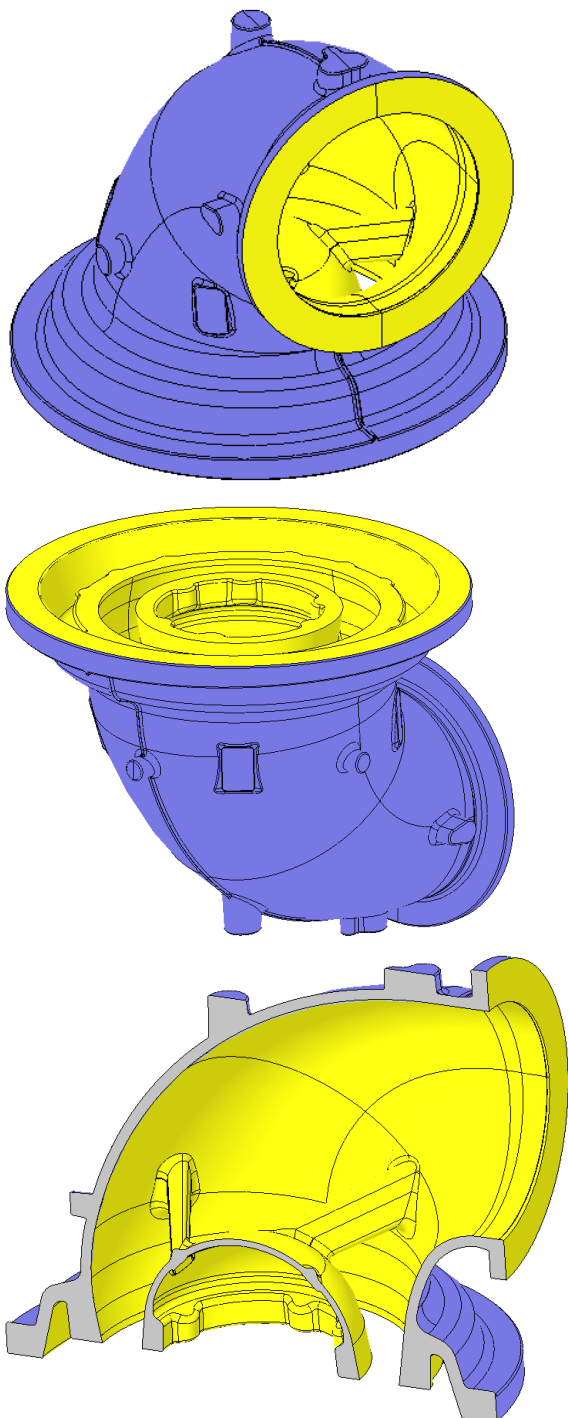


Annex D of AN 410 Part 1.1

Annex 3 of AN 400 Part 2

Example pictures for coating of
turbocharger components

Turbine inlet casing of the type TCT

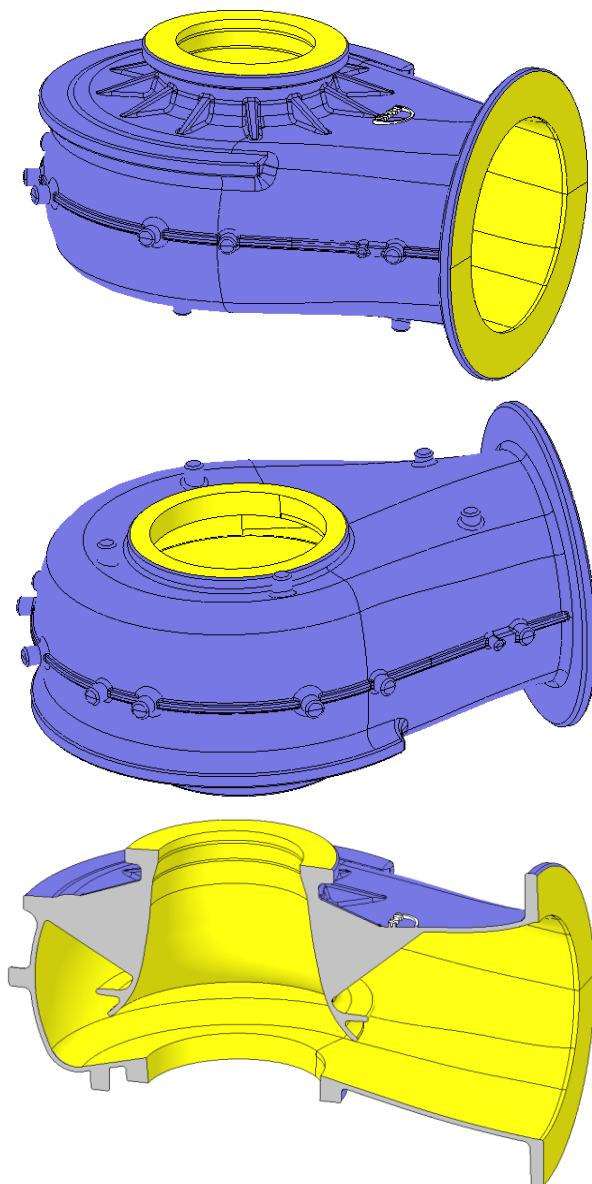


Annex D of AN 410 Part 1.1

Annex 3 of AN 400 Part 2

Example pictures for coating of
turbocharger components

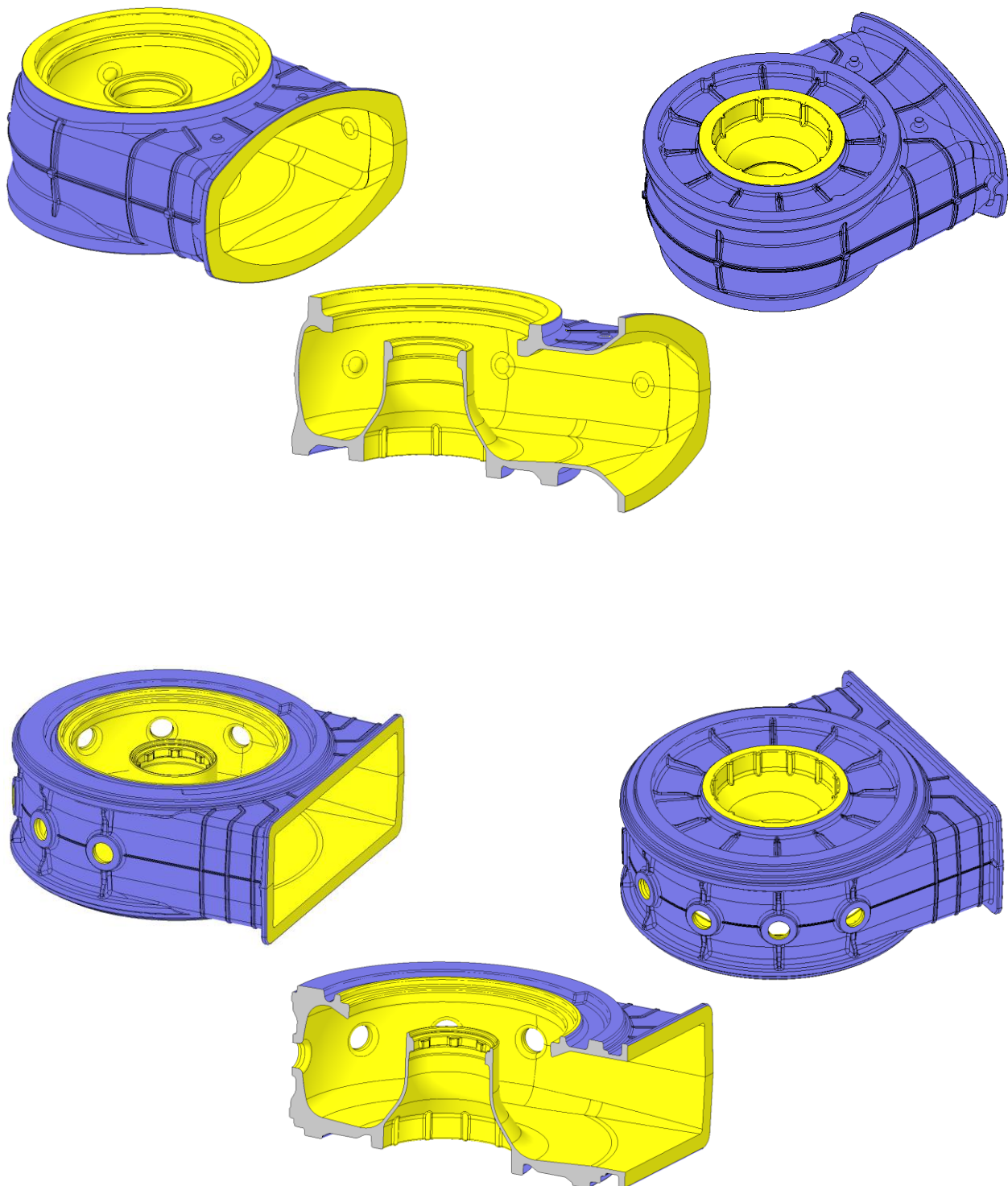
Turbine outlet casing of the type TCR



Annex D of AN 410 Part 1.1 **Annex 3 of AN 400 Part 2**

Example pictures for coating of
turbocharger components

Turbine outlet casing of the type TCA

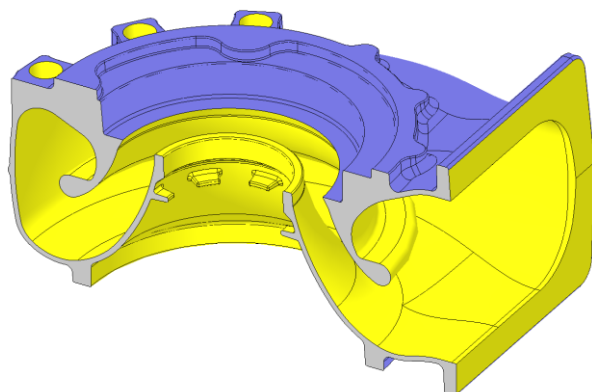
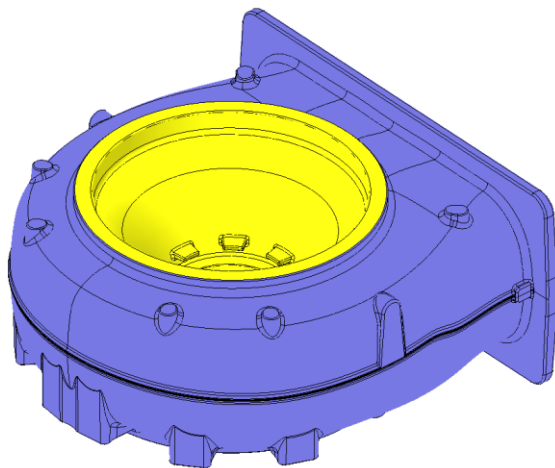
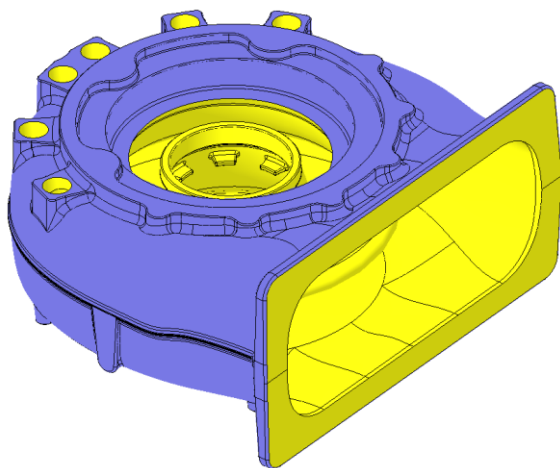


Annex D of AN 410 Part 1.1

Annex 3 of AN 400 Part 2

Example pictures for coating of
turbocharger components

Turbine outlet casing of the type TCT

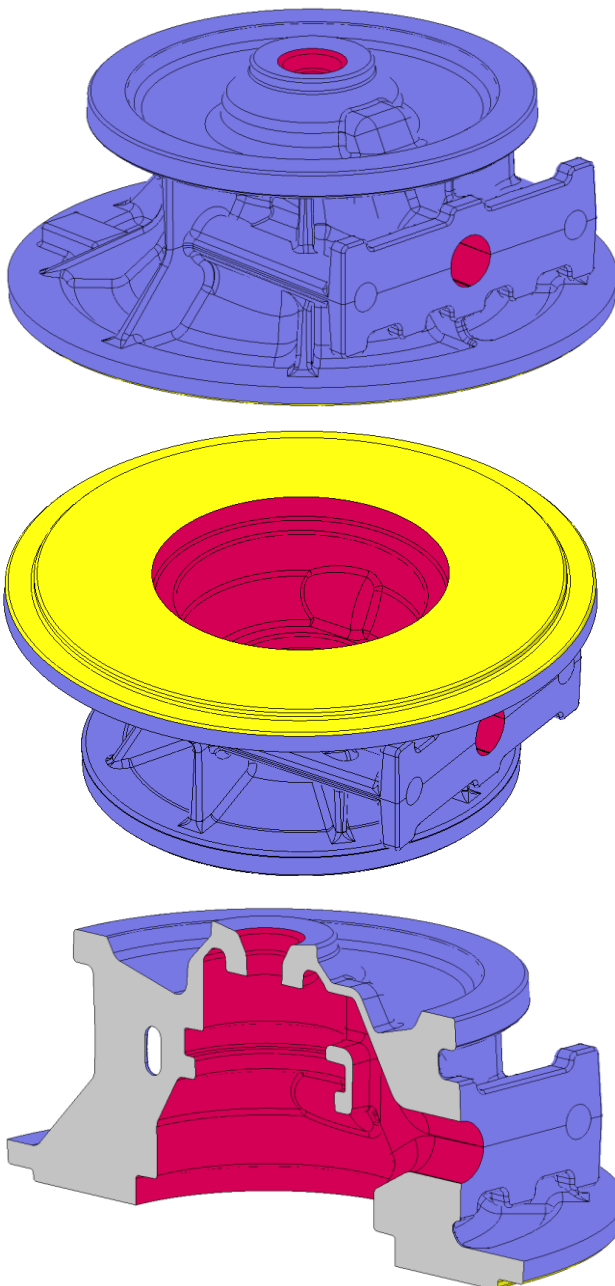


Annex D of AN 410 Part 1.1

Annex 3 of AN 400 Part 2

Example pictures for coating of
turbocharger components

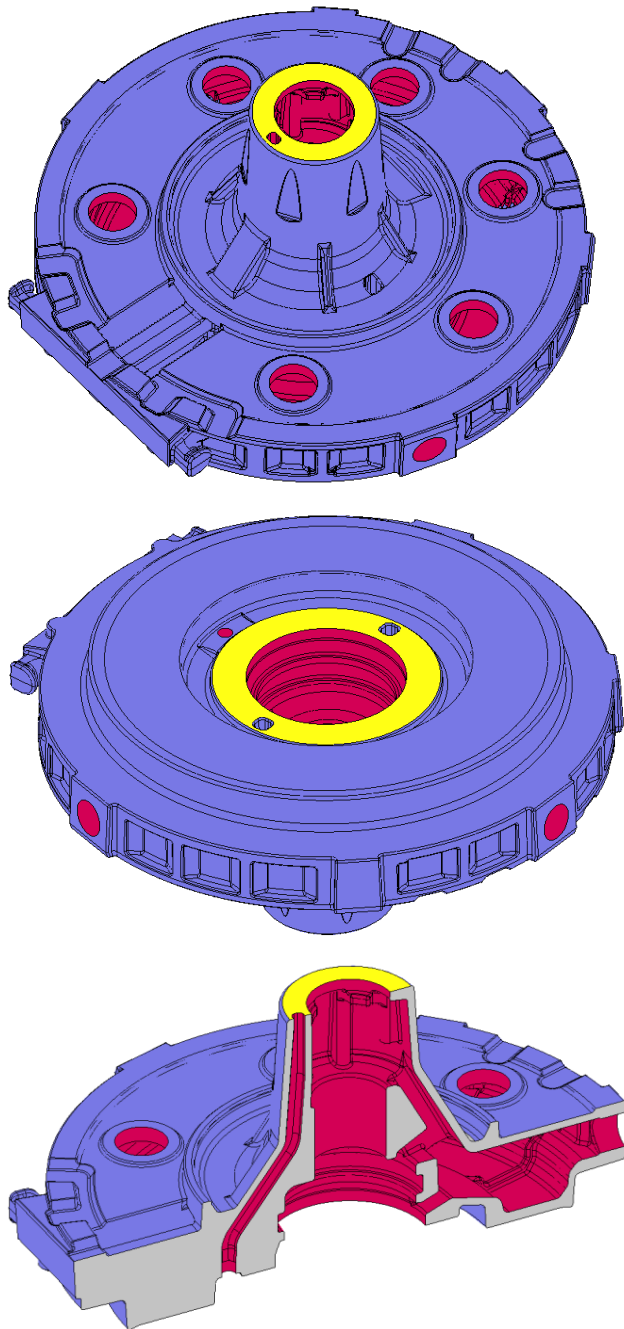
Bearing casing of the type TCR



Annex D of AN 410 Part 1.1 **Annex 3 of AN 400 Part 2**

Example pictures for coating of
turbocharger components

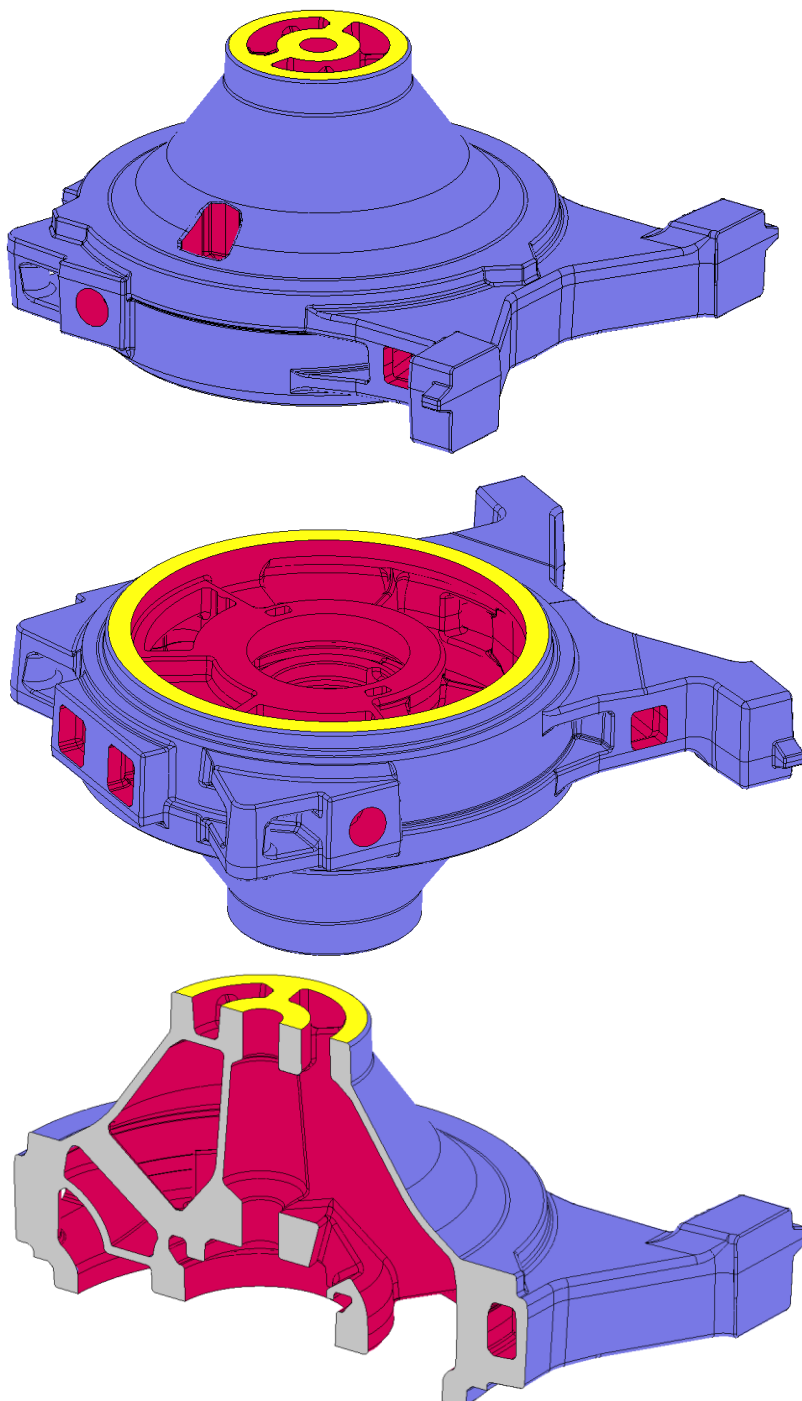
Bearing casing of the type TCA



Annex D of AN 410 Part 1.1 **Annex 3 of AN 400 Part 2**

Example pictures for coating of
turbocharger components

Bearing casing of the type TCT

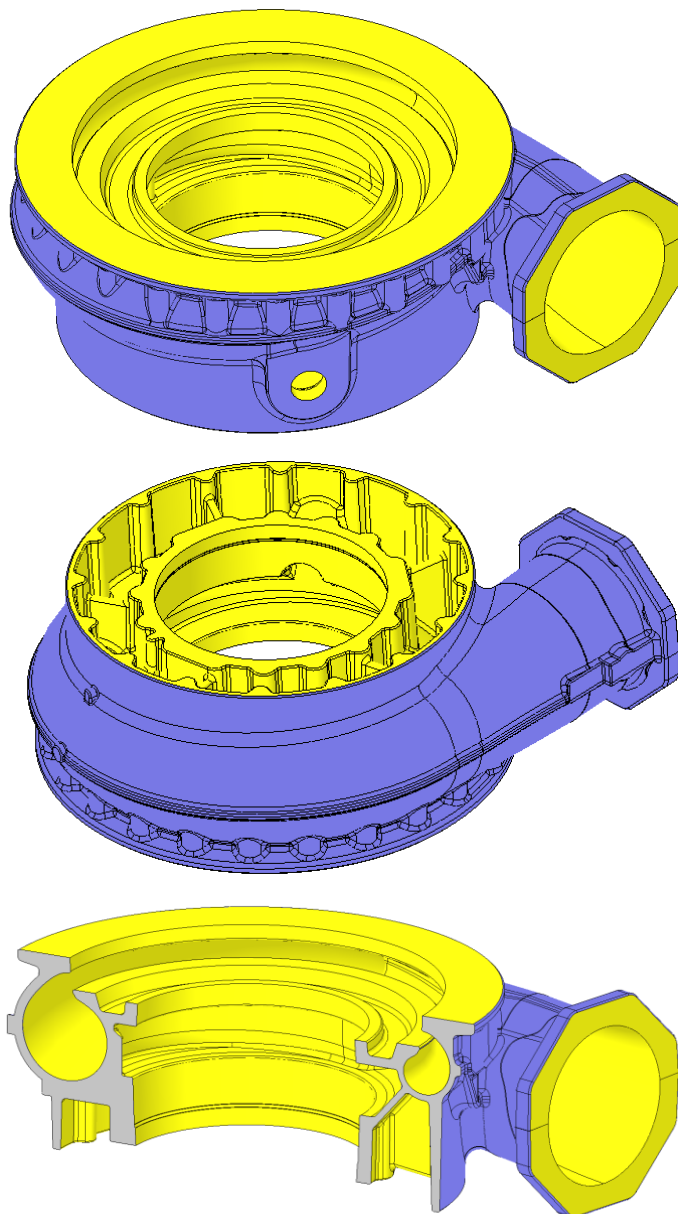


Annex D of AN 410 Part 1.1

Annex 3 of AN 400 Part 2

Example pictures for coating of
turbocharger components

Compressor casing of the type TCR

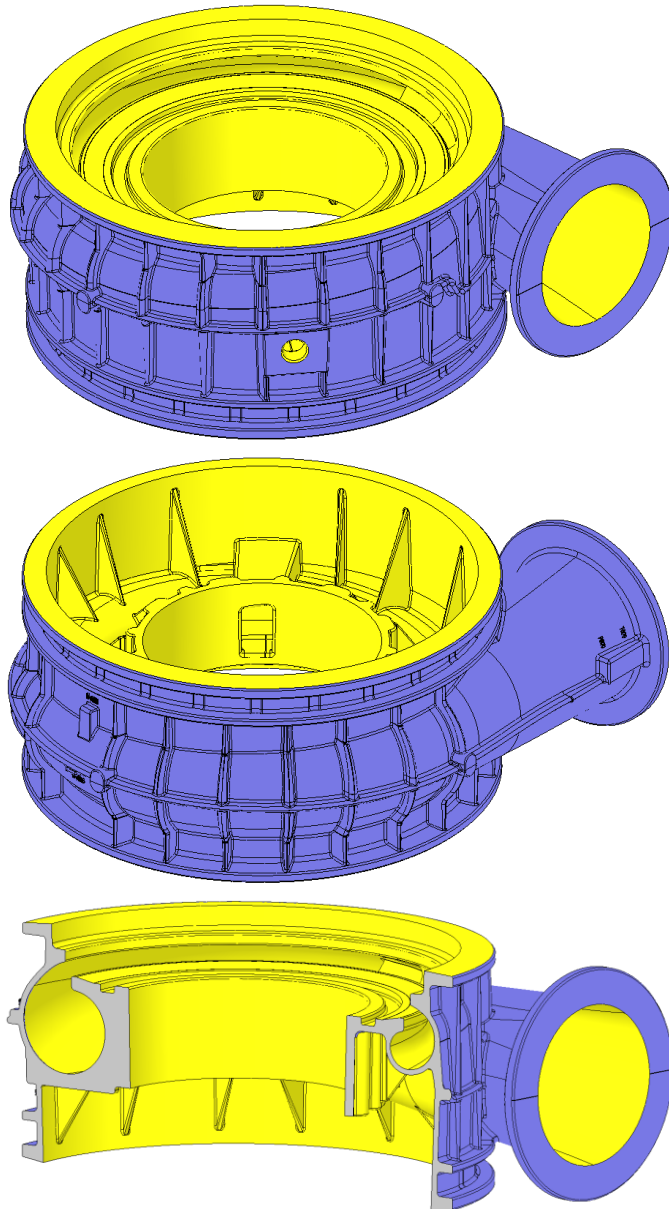


Annex D of AN 410 Part 1.1

Annex 3 of AN 400 Part 2

Example pictures for coating of
turbocharger components

Compressor casing of the type TCA



Annex D of AN 410 Part 1.1

Annex 3 of AN 400 Part 2

Example pictures for coating of
turbocharger components

Compressor casing of the type TCT

