
Press release

Copenhagen, 01.02.2024

MAN Energy Solutions SE
Tegholmegade 41,
2450 Copenhagen SV,
Denmark
www.man-es.com

Group Communications
Nils Søholt
P +45 33 85 26 69
Nils.Soeholt@man-es.com

MAN Propulsion Package to Power Tanker Quartet

German operator of oil/chemical tankers chooses MAN propulsion solution with main and auxiliary engines plus MAN Alpha propeller

Fujian Mawei Shipbuilding and Xiamen Shipbuilding Industry in China have ordered 4 × MAN 10L32/44CR main engines in connection with the construction of 4 × 41,000 dwt oil-and-chemical tankers for German Tanker Shipping (GTS). The construction of the 199 m Swedish Fartygskonstruktioner AB-designed newbuildings is set to start at Xiamen Shipbuilding with delivery scheduled from mid-2025 onward. The order includes options for an additional two vessels.

Each main engine will have a power output of 600 kW per cylinder and comes integrated with MAN Energy Solutions' proprietary LP-SCR (Low-Pressure Selective Catalytic Reduction) system that delivers NO_x-reduction rates of up to 90% in fulfilling the latest IMO environmental requirements. Each engine will drive an MAN Alpha VBS1260 CP propeller via a Flender GUCK-1560 gearbox.

Each vessel will also feature MAN auxiliary engines in the form of 2 × 8L23/30H Mk2 (at 900 rpm) and 1 × 6L23/30H Mk2 (at 720 rpm) GenSets. MAN Energy Solutions licensee, CSSC Marine Power Co., Ltd (CMP), will build these engines in China.

GTS Executive Management stated that it was very proud to continue its newbuild investment program, especially during the company's 25th anniversary year, with its long and loyal partner, MAN Energy Solutions.

Lex Nijsen – Vice President, Marine Europe and Americas – MAN Energy Solutions, said: "This entire project is testimony to the excellent, decades-long cooperation between GTS and MAN Energy Solutions. It's a notable feather in our cap to have been selected as propulsion-system supplier for these ice-classed newbuilds."

Christian Kamm – Sales Manager Europe, Marine – MAN Augsburg, said: "The MAN 32/44CR engine maintains high efficiency at all times and there is no fuel penalty or de-rating when operating the SCR system, especially with HFO. This is in great part due to the lower temperature that MAN SCR solutions operate at and that meet the highest emission standards."

Common-rail engines

MAN common-rail engines are capable of burning conventional fuels like HFO, MDO and MGO, as well as sustainable fuels like biodiesel (HVO and/or FAME). They are also designed so as to be ready for retrofit to methanol operation as green fuel should that be desired at a later stage. The 32/44CR's SaCoS 5000

engine automation system also enables it to fulfil cyber security requirements and facilitates remote technical support.

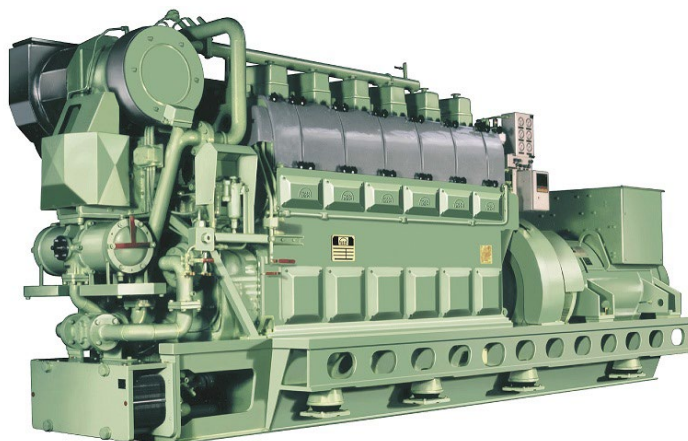
MAN Alpha propeller

Colin Peesel – Head of Sales & Promotion, Germany – MAN Energy Solutions, added: “The combination of the MAN 10L32/44CR main engine and MAN Alpha CP propeller – including the intelligent Alphatronic 3000 propulsion-control system – will deliver a reliable, efficient and flexible solution, running the vessels at their optimal loadpoint in order to align with the all-important Energy Efficiency Design Index.”

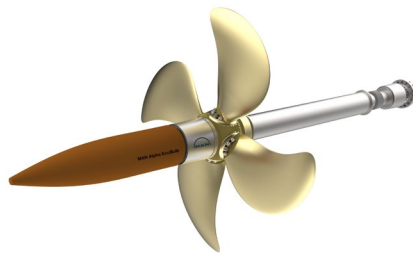
Jens Munch – Sales Manager, MAN Alpha Frederikshavn – MAN Energy Solutions said: “In this particular order, we are using our newest technology by fitting the ships with water-lubricated stern tubes. In doing so, we are ensuring that there is no ‘oil-to-water interface’, eliminating any possibility of oil leaks and boosting the owner’s green profile. Such stern tubes are one of the biggest eco-trends that we foresee in the market and we have proven technology available based on our great experience with naval vessels where this solution has been used for many years.”

About German Tanker Shipping

GTS is a Bremen-based shipping company with a fleet consisting of 14 modern oil-product tankers. All built in Germany, nine vessels sail under the German flag and the other five under that of the Seychelles; GTS manages all its own tankers.



The MAN CMP 23/30H Mk2 GenSet



The MAN Alpha CP propeller – in combination with its fairing cone and MAN EcoBulb design – and Alphasonic 3000 propulsion control system significantly reduce fuel consumption and emissions for economical operation.

MAN Alpha has delivered more than 7,000 propellers for the propulsion of ships at all corners of the globe – operating under various, extreme environments ranging from tropical fresh water to ice-packed arctic climates.

MAN Energy Solutions enables its customers to achieve sustainable value creation in the transition towards a carbon neutral future. Addressing tomorrow's challenges within the marine, energy and industrial sectors, we improve efficiency and performance at a systemic level. Leading the way in advanced engineering for more than 250 years, we provide a unique portfolio of technologies. Headquartered in Germany, MAN Energy Solutions employs some 14,000 people at over 120 sites globally. Our after-sales brand, MAN PrimeServ, offers a vast network of service centres to our customers all over the world.