
Press release

Copenhagen, 16.04.2024

MAN Energy Solutions SE
Tegholmegade 41,
2450 Copenhagen SV,
Denmark
www.man-es.com

Group Communications
Nils Søholt
P +45 33 85 26 69
Nils.Soholt@man-es.com

World's Largest Car Carriers Ordered with MAN Energy Solutions Propulsion Package

MAN B&W 8S60ME-GI Eco-EGRBP and MAN 8L28/32DF engines to power PCTCs

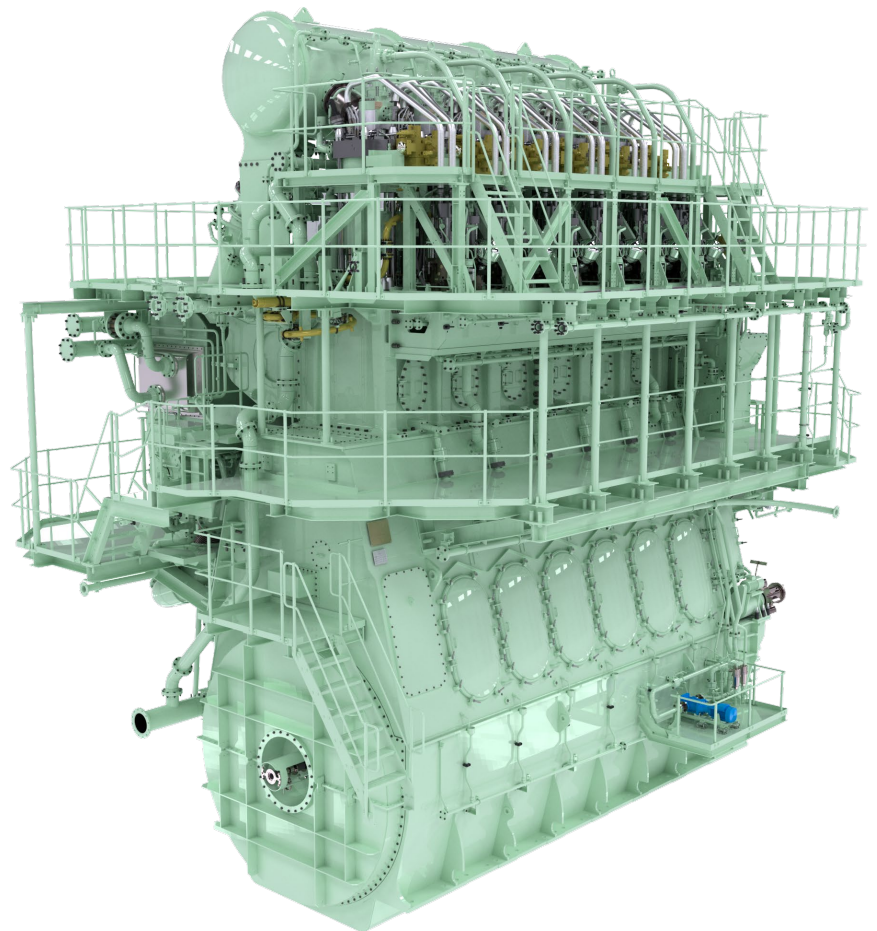
Chinese yard, Guangzhou Shipbuilding International (GSI), has received an order for 4 × MAN B&W 8S60ME-GI engines in connection with the building of 4 × 10,800 CEU Pure Car and Truck Carriers (PCTCs) for South Korean shipping owner, HMM Co. Ltd.. CSIC Diesel Engine Co. Ltd (CSE) will build the Mk10.5 dual-fuel -GI (-Gas Injection) engines in China, which will feature Exhaust Gas Recirculation (EGR) emissions-reduction technology for Tier III NO_x compliance.

Upon delivery, the PCTCs will go out on charter to Hyundai Glovis Co., Ltd., the logistics company headquartered in Seoul, South Korea and part of the Hyundai Kia Automotive Group.

MAN Energy Solutions will also provide the 3 × MAN 8L28/32DF (Dual-Fuel) GenSets aboard each vessel with CSSC Marine Power Zhenjian Ltd. (CMP) set to build these, also in China.

Bjarne Foldager – Country Manager, Denmark – MAN Energy Solutions, said: “We are delighted to secure this order, underscoring MAN Energy Solutions’ ability to deliver comprehensive propulsion solutions for cutting-edge PCTC projects. This achievement sets the stage for establishing a market standard in next-generation PCTC vessels, integrating our trusted and proven engines. Winning contracts for both main and auxiliary engines aligns with our strategic goal of providing complete propulsion packages. Congratulations to HMM for their bold commitment to decarbonisation.”

Thomas S. Hansen – Head of Sales and Promotion – MAN Energy Solutions, said: “The car carrier market is currently thriving and demand for new tonnage is at an all-time high. Most of these newbuildings are with dual-fuel engines – on account of new emission regulations – with LNG leading the way as most popular alternative fuel. That said, our main engines here will also be delivered as both methanol- and ammonia-ready. Accordingly, the ME-GI engine remains the most prominent dual-fuel engine in the market with more than 700 orders. It is the world’s most efficient, methane-fuelled engine and has extremely low levels of methane slip, which make it the industry’s leading dual-fuel engine across vessel types such as container vessels, bulk carriers, tankers, as well as car carriers.”



The MAN B&W ME-GI engine

MAN Energy Solutions enables its customers to achieve sustainable value creation in the transition towards a carbon neutral future. Addressing tomorrow's challenges within the marine, energy and industrial sectors, we improve efficiency and performance at a systemic level. Leading the way in advanced engineering for more than 250 years, we provide a unique portfolio of technologies. Headquartered in Germany, MAN Energy Solutions employs some 14,000 people at over 120 sites globally. Our after-sales brand, MAN PrimeServ, offers a vast network of service centres to our customers all over the world.