

Dear Sirs

Stability calculations on the lifting tools for cylinder unit and cylinder liner have shown that a pre-damage may happen, even at a small misuse of the tools.

This means that if the tools have been handled incorrectly, or if a cylinder unit or cylinder liner have been lifted in a non-vertical direction, the tools may have been damaged, or may have suffered from so-called pre-damage.

As a consequence new tools have been developed to provide a higher safety against such damages. These tools are delivered with all new engines leaving the factory, but some of the old type of tools are still in use on several vessels in service.

To identify if you have the new or the old type of tools, please pay attention to the tool number stated on the tools, and compare the tools to the sketches seen on the next page.

If you have identified that you have any of the old type of tools, we kindly request you to check carefully if any of them have any visible damages. If this is the case, please scrap them and contact MAN Diesel for sending the new type of tools at site. If there are no damages to any of the tools you can continue using them as long as they are only used as lifting tools. It is strictly prohibited to use them to pry off the cylinder unit or - liner.

The request applies to all vessels, production facilities, repair centres and test centres where the old tools are used. If you discover any broken tools, we will supply you with a set of the new tools.

Yours faithfully




**Jørgen Påske Nielsen**

Senior Manager  
GenSet  
PrimeServ Holeby

**Nicki Lunde-Christensen**

Section Manager  
Small Bore License Engines  
Four-stroke, R & D Engineering

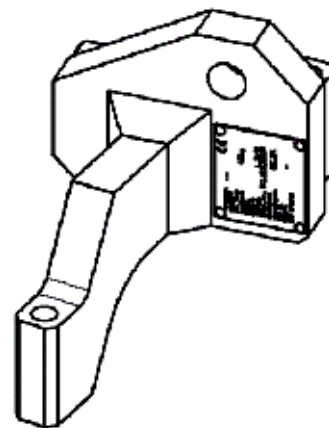
Action code: **When convenient**

**Lifting Tools for Cylinder Unit, Cylinder Liner and Dismantling Tool for Bearing Shell**

February 2009  
SL09-506/KKA

**Concerns**

Owners and Operators of MAN  
Four-stroke Diesel Engines Type  
L21/31.



**MAN Diesel**

Østervej 2  
4960 Holeby  
Denmark  
Phone: +45 54 69 31 00  
Fax: +45 54 69 30 30  
mandiesel-hol@mandiesel.com  
www.mandiesel.com

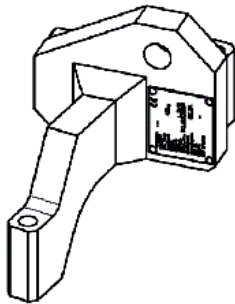
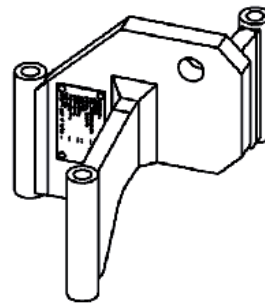
**MAN Diesel**

Niels Juels Vej 15  
9900 Frederikshavn  
Denmark  
Phone: +45 96 20 41 00  
Fax: +45 96 20 40 30  
mandiesel-frh@mandiesel.com

**MAN Diesel**

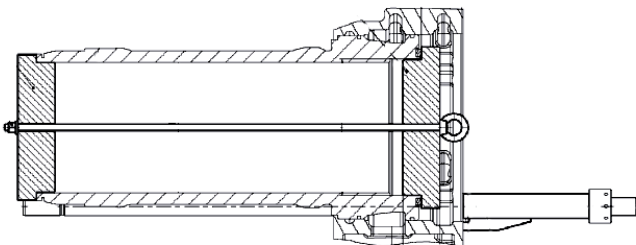
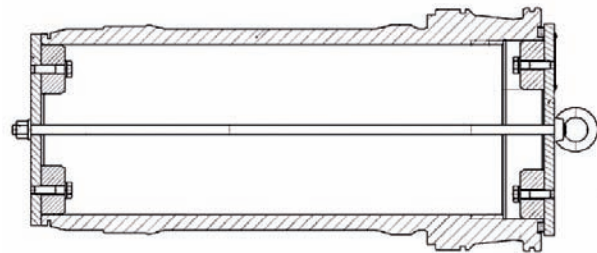
Branch of MAN Diesel SE, Germany  
CVR No.: 31611792  
Head office: Teglhølmegade 41  
2450 Copenhagen SV, Denmark  
German Reg.No.: HRB 22056  
Amtsgericht Augsburg

Old lifting tool for complete cylinder unit is marked with tool number: 055.206, and can be identified by the 3 "legs" to attach the cylinder head, and is made from 15 and 20 mm thick materials.



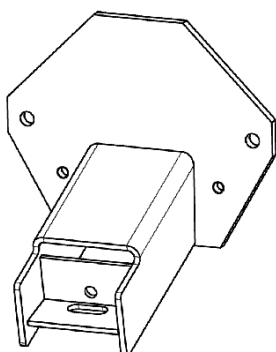
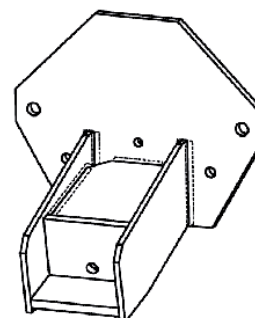
New lifting tool is marked with: 055.224, and only has 2 mounting points for the cylinder head, and is made from 25 mm thick materials.

Old lifting tool for cylinder liner is marked with tool number: 050.166. It can be identified by the use of round plastic discs to support the cylinder liner.



New lifting tool for cylinder liner is marked with tool number: 050.177. This tool can be identified by the end supports made from Aluminium.

Old dismantling tool for bearing shell is marked with tool number: 030.336. This tool is welded from different pieces of sheet metal.



New dismantling tool is marked with: 030.514, and can be identified by the profile-iron used as support for the connecting rod bearing upper part.