



Dear Sirs

From one of our sub-suppliers we have been informed that a batch of shafts delivered for the roller guide at our L16/24 engine type is not produced in accordance with our specification and subsequently does not fulfil our specification in respect of hardness.

The shaft is shown on Plate 50801-02H as Item 065, shaft for inlet and outlet roller guide, Plate attached for reference.

The shafts involved are delivered from our stock since May 2006, however, up to now only a few cases of malfunction have been reported.

As we are not able to trace the supplies of each shaft piece we recommend to check the shafts found in your stock in order to avoid these to be installed.

The affected shafts do have a shiny surface, these may be scrapped, shafts with correct treatment can be determined as they appear black at the surface, see below picture fig 1. Shafts with incorrect treatment will be replaced free of charge.

For engines in service we recommend to carry out inspection of inlet and exhaust rollers and cams as a preventive maintenance check.

In case, abnormal wear or damage is found at the rollers or cams we recommend to carry out an inspection of the roller guide in order to determine if the installed roller guide shaft is from the affected batch (shiny type). We recommend that the roller guides are inspected in connection with the first 12,000 running hours overhaul at the latest.

In case, the affected type is found installed the involved parts will be replaced free of charge.

We kindly ask for your understanding and support in this matter and apologise for any inconvenience caused for your business.

In case, your engines are affected by this Service Letter, please contact MAN Diesel, PrimeServ Holeby by e-mail PrimeServ-hol@mandiesel.com for delivery of replacement parts.

Yours faithfully

Jørgen Påske Nielsen

Senior Manager
GenSet
PrimeServ Holeby

Nicki Lunde Christensen

Section Manager
Small Bore License Engines
Four-stroke, R & D Engineering

Action code: **At first opportunity**

Shaft for Roller at Inlet and Exhaust Valve Guide

February 2009
SL09-508/JEM

Concerns

Owners and Operators of MAN
Four-stroke Diesel Engines Type
L16/24.

MAN Diesel

Østervej 2
4960 Holeby
Denmark
Phone: +45 54 69 31 00
Fax: +45 54 69 30 30
mandiesel-hol@mandiesel.com
www.mandiesel.com

MAN Diesel

Niels Juels Vej 15
9900 Frederikshavn
Denmark
Phone: +45 96 20 41 00
Fax: +45 96 20 40 30
mandiesel-frh@mandiesel.com

MAN Diesel

Branch of MAN Diesel SE, Germany
CVR No.: 31611792
Head office: Teglholtsgade 41
2450 Copenhagen SV, Denmark
German Reg.No.: HRB 22056
Amtsgericht Augsburg

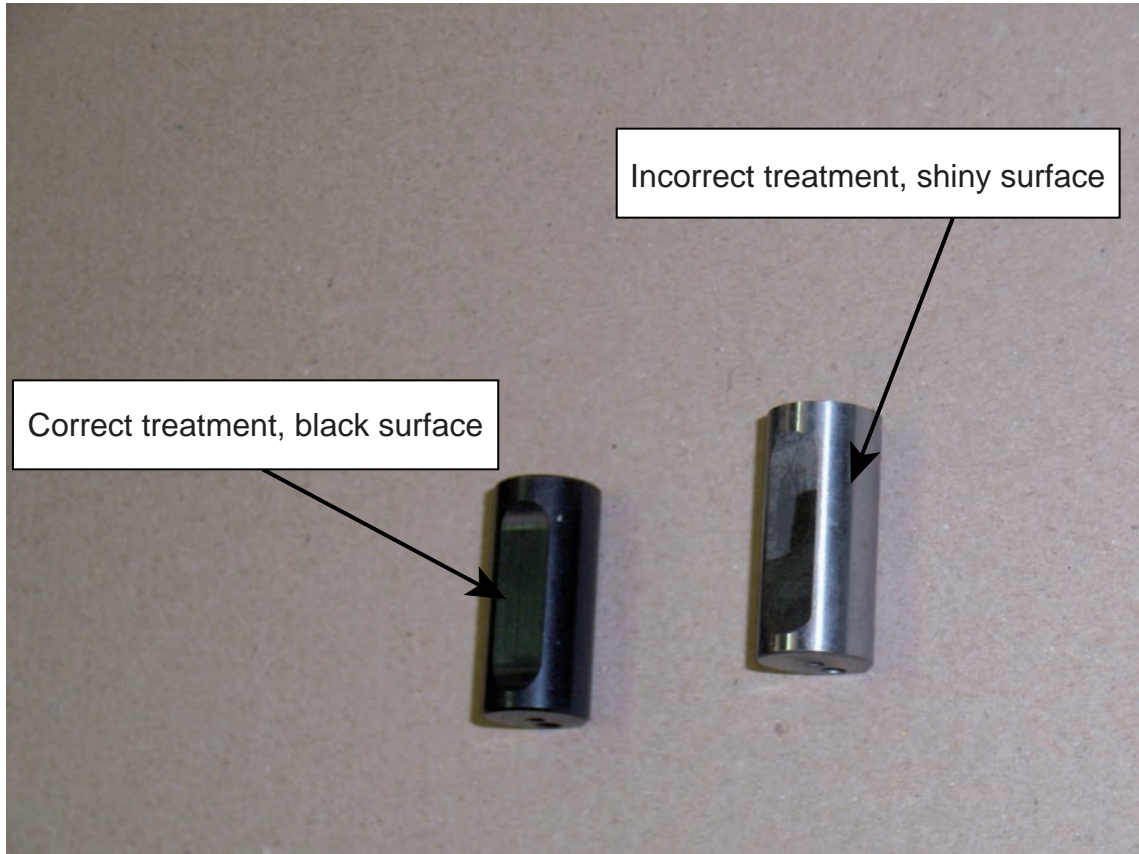
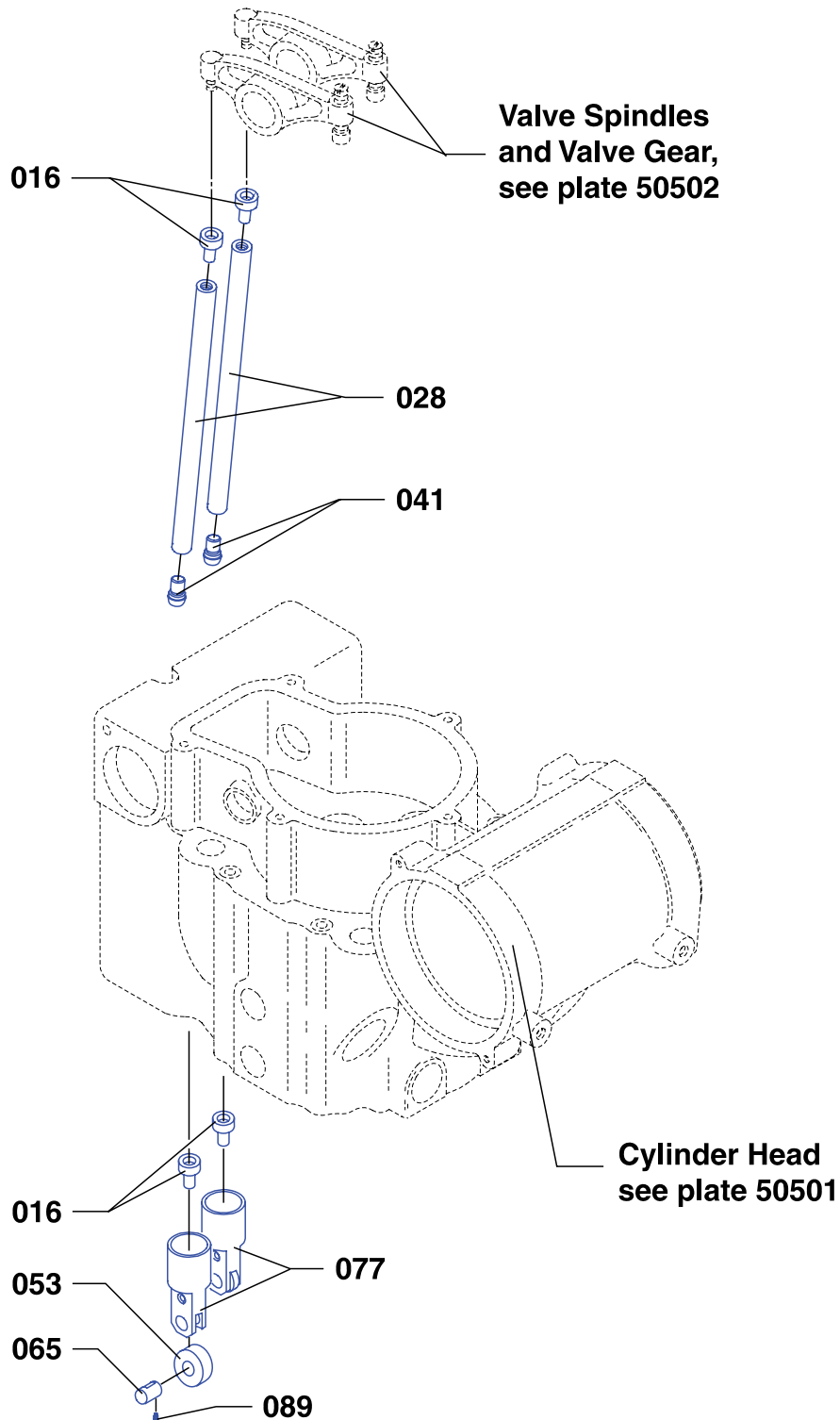


Fig 1.

L16/24



08028-0D/H5250/94.08.12

50801-02H

Roller Guide and Push Rods

Plate
Page 2 (2)

L16/24

Item No	Qty	Designation	Benævnelse	Item No	Qty	Designation	Benævnelse
016	4/C	Thrust piece	Trykstykke				
028	2/C	Push rod	Stødstang				
041	2/C	Bolt	Bolt				
053	2/C	Roller	Rulle				
065	2/C	Shaft	Aksel				
077	2/C	Housing for roller guide	Hus for rullestyr				
089	2/C	Screw	Skrue				

When ordering spare parts, see also page 500.50.

* = Only available as part of a spare parts kit.
Qty/C = Qty/Cylinder.

Ved bestilling af reservedele, se også side 500.50.

* = Kun tilgængelig som en del af et reservedelssæt.
Qty/C = Qty/Cylinder.

08028-0D/H5250/94.08.12