

Dear Sir or Madam

We have developed a new future-proof version of the BM2 base modules (BM2V2), as the existing modules on engines and gearboxes consist of components that are obsolete. For this reason, we are currently unable to supply BM2 modules of the previous design.

The new BM2V2 modules have the same form, fit and function, but are unable to operate together with the previous version of BM2. Therefore, the new version must be installed in pairs/sets, so that the local monitoring control and safety (LMCS) on the engine and gearbox is completely upgraded. This is called the 'BM2 Upgrade Package'. We recommend implementing this upgrade in due time, as a defective BM2 module will reduce the safety and alarm system efficiency and, eventually, cause downtime on the engine.

Retrofitting the existing engine and gear-mounted BM2 modules with the new BM2V2 version is not a plug-and-play solution. It requires adaption and upload of the BM2V2 software configuration, and must be performed by a superintendent with expert knowledge of the LMCS system.

If you have any maintenance planned in the near future, we recommend ordering the BM2 Upgrade Package, and have the superintendent install it when already on board.

Benefits of the BM2 Upgrade Package:

- Reduce the risk of system failure and vessel downtime
- Order now, install when convenient
- Fast installation (1 day)

If you have any questions regarding the above, please contact [RetrofitDK@man-es.com](mailto:RetrofitDK@man-es.com).

Yours faithfully



**Michael Petersen**  
Senior Vice President  
PrimeServ Denmark



**Jens Seeberg**  
Head of Retrofit & Upgrade  
Propeller & Propulsions Spare Parts

Action code: WHEN CONVENIENT

## Local monitoring control and safety

LMCS base module 2 replacement

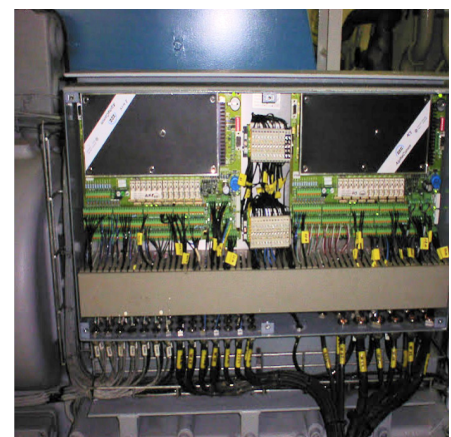
SL2023-734/CRBD  
February 2023

### Concerns

MAN L27/38 and L21/31 propulsion engines and AMG-EV gearboxes

### Summary

New BM2V2 to replace existing and obsolete module type



**Head office (& po. address)**  
**MAN Energy Solutions**  
Teglholmegade 41  
2450 Copenhagen SV  
Denmark  
Phone: +45 33 85 11 00  
Fax: +45 33 85 10 30  
info-cph@man-es.com  
www.man-es.com

**PrimeServ**  
Teglholmegade 41  
2450 Copenhagen SV  
Denmark  
Phone: +45 33 85 11 00  
Fax: +45 33 85 10 49  
PrimeServ-cph@man-es.com

**Production**  
Teglholmegade 35  
2450 Copenhagen SV  
Denmark  
Phone: +45 33 85 11 00  
Fax: +45 33 85 10 17  
manufacturing-dk@man-es.com

**Forwarding & Receiving**  
Teglholmegade 35  
2450 Copenhagen SV  
Denmark  
Phone: +45 33 85 11 00  
Fax: +45 33 85 10 16  
shipping-cph@man-es.com

**MAN Energy Solutions**  
Branch of MAN Energy Solutions  
SE, Germany  
CVR No.: 31611792  
Head office: Teglholmegade 41  
2450 Copenhagen SV, Denmark  
German Reg.No.: HRB 22056  
Amtsgericht Augsburg